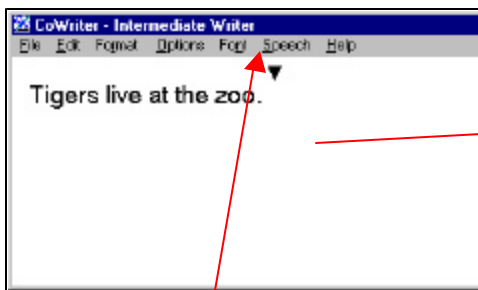
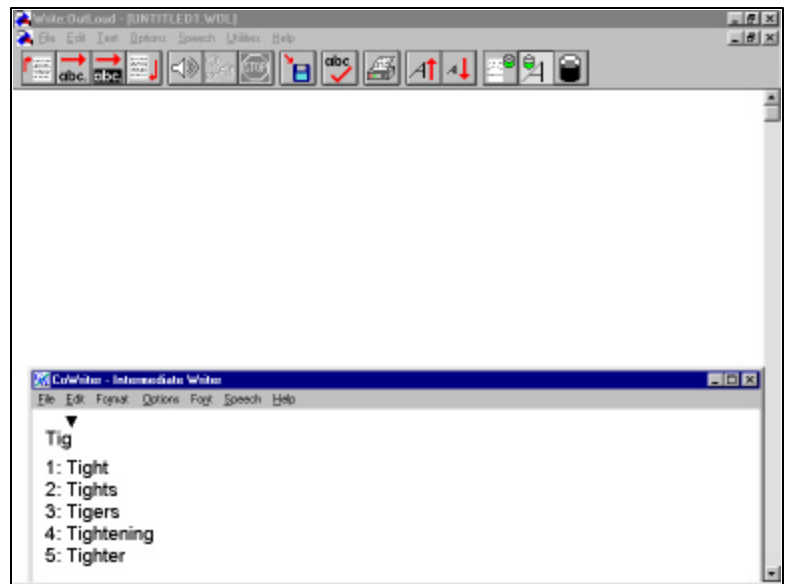
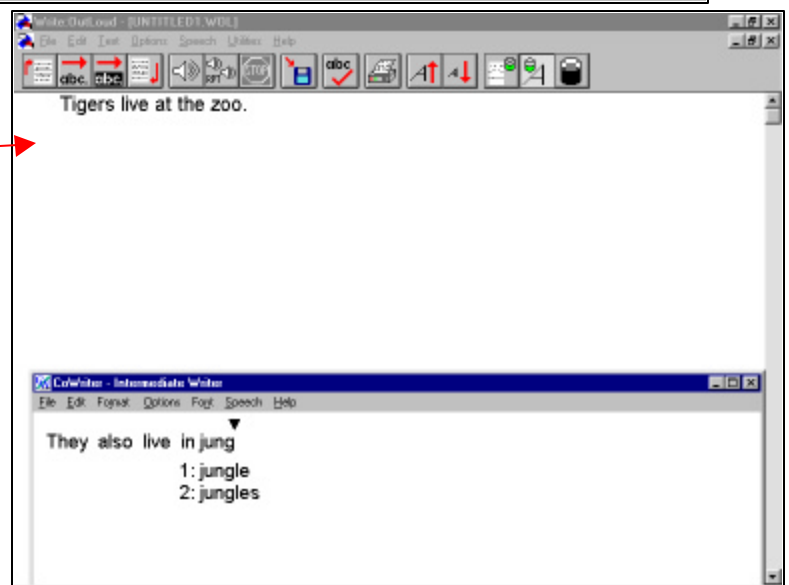


The following example demonstrates the use of a popular word prediction program, *Co-Writer 4000* (Don Johnston, Inc.) used with a talking word processor, *Write:Outloud*.

● As a student types the first letter of a word, five words beginning with that letter appear on the screen. The student selects the word s/he wants by typing the number next to it, clicking on it or activating a switch as the choices are scanned, highlighted and spoken. The word is then seen completed on the screen.

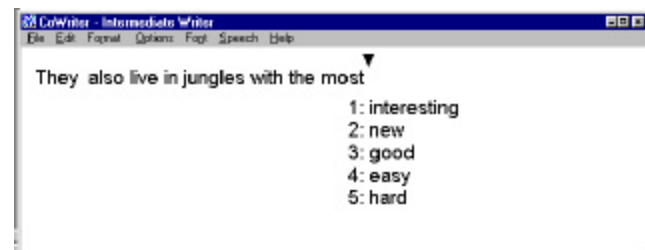


When punctuation indicates the sentence is complete, the sentence is put into the word processor.



The student continues to write.

The student not only reduces the number of keystrokes needed to write but can enhance his vocabulary with word prediction software which suggests possible word choices.



Options in word prediction programs can include speaking words and sentences as they are created for review, editing or communication purposes. The number of word choices and how they are selected can be modified to meet the needs of the individual user. Some programs include voice

output and scanning features. This word prediction property can sometimes be found in other assistive programs such as onscreen keyboards.

New features of Co:Writer 4000 include:

- 3 Writer Levels: beginner, intermediate and advanced templates
- FlexSpell: offers words from phonetic spellings
- Topic Dictionaries - supplement the main dictionary on customized topics
- Background, text and cursor color choices
- New Via Voice Speech Engine

Cross platform CD's support multiple students and classrooms.